

rational^{eyes}



TeamDevCentral

Setup Guide Welcome Package

April 2008

Prepared by Mustapha Refai

Contents

Purpose of this document	2
Introduction	2
Obtaining Visual Studio Team System 2008 Team Explorer	3
Using Team System Web Access as an alternative to 2008 Team Explorer	3
Testing Ports for Visual Studio Team System 2008.....	3
Setting up Visual Studio Team System 2008 Team Explorer	4
Understanding VSTS, TFS and TeamDevCentral	8

Change Logs

<i>Version</i>	<i>Date</i>	<i>Author/Editor</i>	<i>Reviewer</i>	<i>Description</i>
1.0	Apr. 1, 2008	Mustapha Refai		Creation
1.1	Apr.24, 2008	John Collis		Modified, augmented
1.2	Apr.24, 2008	Adam Di Carlo		Modified, augmented
1.3	October 12, 2008	Adam Di Carlo		Modified to include information on required ports for TFS.

Purpose of this document

The purpose of this document is to provide the new user instructions on how to get set-up and begin working with TeamDevCentral.

Introduction

The Visual Studio Team System (VSTS)/Team Foundation Server (TFS) combination is Microsoft's premiere tool for Application Lifecycle Management. With it, teams may collaborate together to work efficiently on Projects – industry standard templates for development processes guide this process; source code and team activities may be managed and assessed; and, work items assigned, addressed, and linked together.

TeamDevCentral is rational eyes online hosted offering of VSTS/TFS; connection is made through the freely available thin, rich client, Microsoft Visual Studio Team System 2008 Team Explorer.



Obtaining Visual Studio Team System 2008 Team Explorer

Visual Studio Team System 2008 Team Explorer (TE2008) is freely available for download from Microsoft at the following location:

<http://www.microsoft.com/Downloads/details.aspx?familyid=0ED12659-3D41-4420-BBB0-A46E51BFCA86&displaylang=en>

Please review Systems Requirements. This download is only available as a disk image file (.iso). For installation, this will require completion of one of two options:

1. Write the image file to blank CD (Recommended); or,
2. Mount image file virtually as CD devices.

Using Team System Web Access as an alternative to 2008 Team Explorer

Team System Web Access (TSWA) can be used as an alternative to TE2008 and can help you get started even faster. Go to: <https://sandbox2.teamdevcentral.com:8091/>

With the id and password supplied in your trial introductory e-mail message log into TSWA.

If you elect to use TSWA, you can skip steps 1 to 9 in the section of this document titled setting up Visual Studio Team System 2008 Team Explorer.

Testing Ports for Visual Studio Team System 2008

Accessing Team Foundation Server requires that the following ports are open on your firewall/proxy.

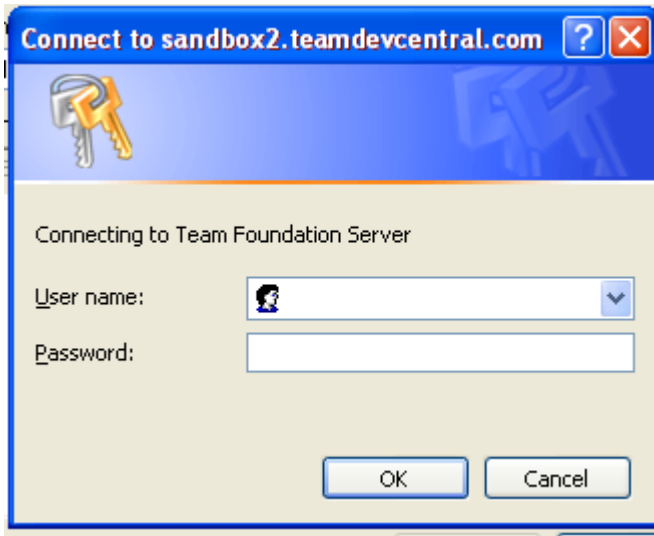
- 443 (SharePoint Site),
- 2443 (SharePoint Central Administrator Site) and,
- 8081 (Team Foundation Server)

You can test that these ports are open/available through your web browser by hitting the following urls:

<https://sandbox2.teamdevcentral.com:443/>
<https://sandbox2.teamdevcentral.com:2443/>
<https://sandbox2.teamdevcentral.com:8081/>



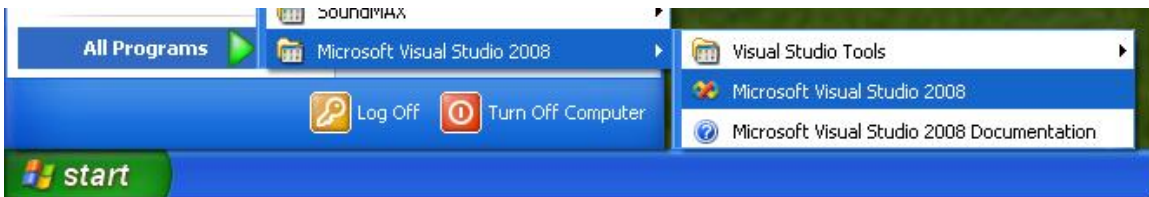
You should see the following log in prompt if your ports are open. All you need to see is the prompt, you don't have to try logging in to know that these ports are open.



Once you have confirmed that the ports are open, you can proceed to the next step, setting up VSTS 2008 Team Explorer. If you do not see the log in prompt, please contact the group or individual who administers your firewall to request that the ports be opened. If you would like to restrict the ports being open to a single IP, please contact support @ support@teamdevcentral.com.

Setting up Visual Studio Team System 2008 Team Explorer

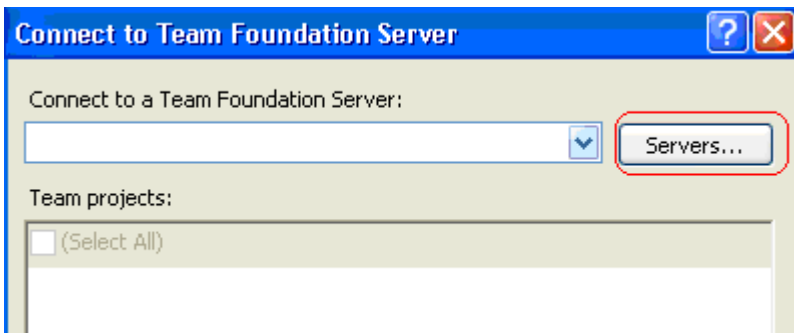
Step 1 - From the **start** menu, select **All Programs\Microsoft Visual Studio 2008**.



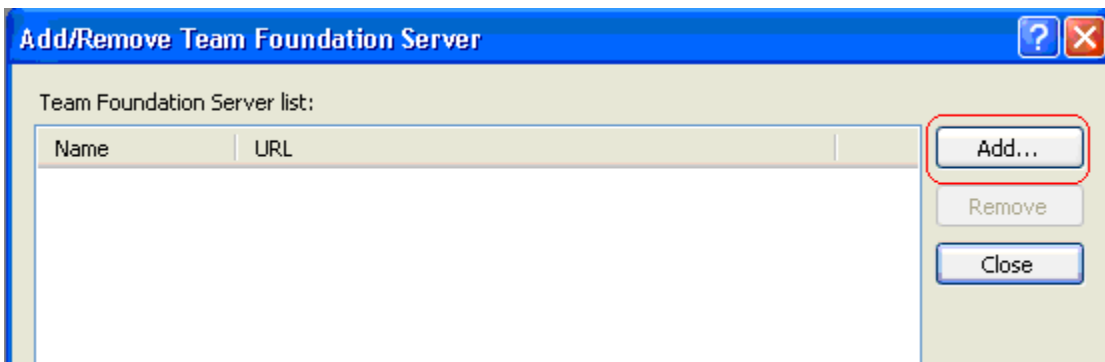
Step 2 – From within TE 2008, under the **Team Explorer** navigation, select the only enabled button, **Add Existing Team Project**. Alternatively, from the File Menu, select **Tools\Connect to Team Foundation Server...**



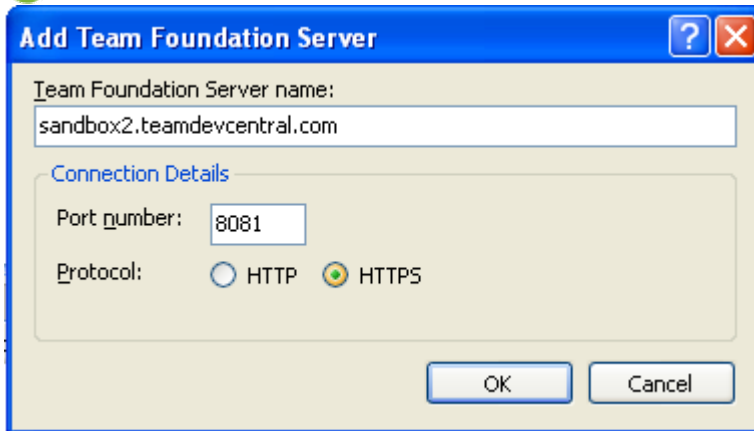
Step 3 – Select **Servers...** to show which Team Foundation Servers your client is connected to.



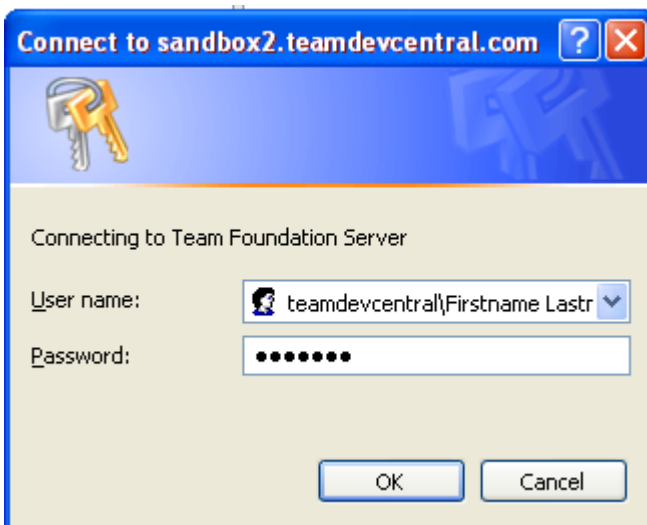
Step 4 – Select **Add...** to add a Team Foundation Server.



Step 5 – In order to connect to TeamDevCentral, provide the following information, then click **OK**.



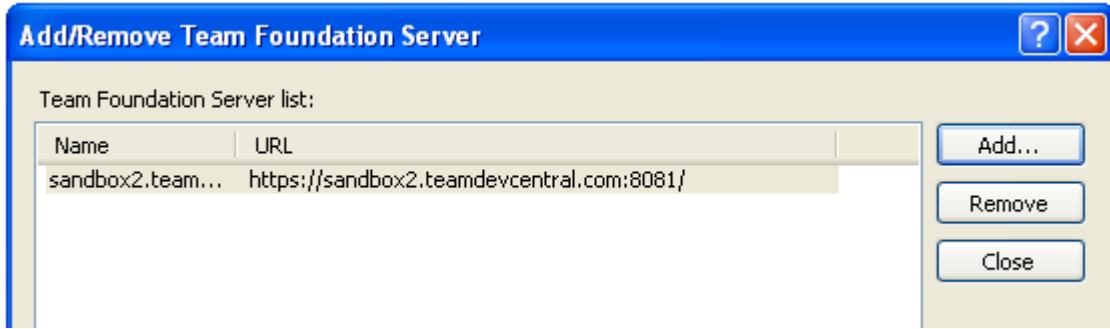
Step 6 – A login dialog box will appear to verify your credentials. Please provide the username and password that were assigned to you, then press **OK**.



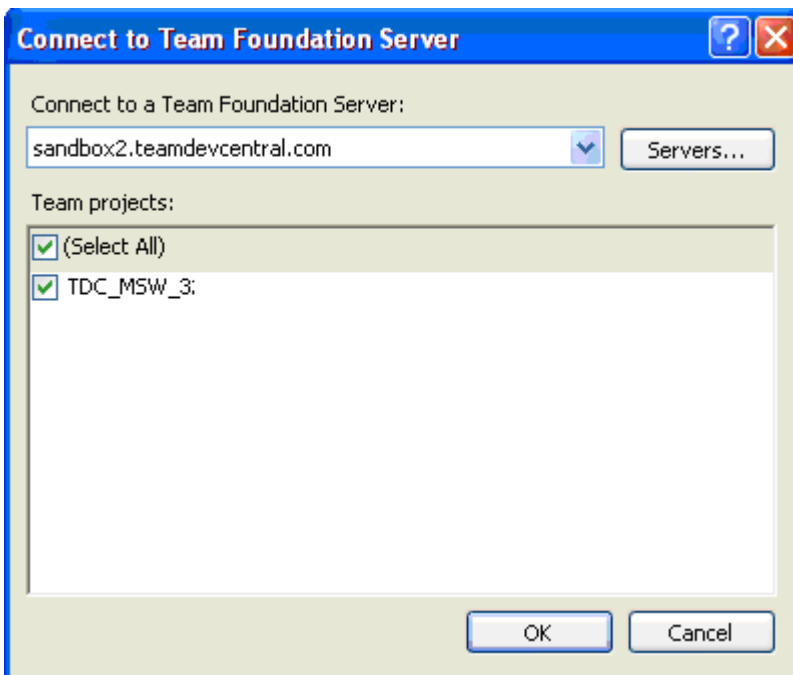
Your user accounts are provided in the e-mail note to which this document was attached.

- The Client Admin role can perform tasks including the creation and modification of work items and generating reports and access to the SharePoint team site. They can also have all of the developer rights plus the ability to revise, unlock and undo other users changes.
- The Developer role can read, check code out and in, label, and lock code, modify work items (e.g. update them) have access to the SharePoint team site.

Step 7 – After successfully connecting the dialog box should present the following information. Select **Close**.

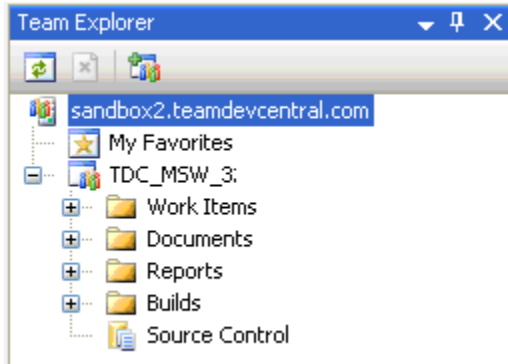


Step 8 - Select the server **sandbox2.teamdevcentral.com** to connect to. Once Team projects have been populated, choose **(Select All)**.





Step 9 – Now that you are successfully connected, you will be presented with your assigned project (with Work items, Documents, Reports and Source Control), under the Team Explorer navigation.



Understanding VSTS, TFS and TeamDevCentral

Visual Studio (VS) is a complete set of development tools for building software. Visual Studio Team System (VSTS) is a platform for productive, integrated, and extensible software development life-cycle tools that helps software teams by improving communication and collaboration throughout the software development process. VSTS is hosted on a Team Foundation Server (TFS).

TeamDevCentral is rational eyes hosted offering of VSTS on our TFS servers. It is accessed through the thin, rich client Visual Studio Team System 2008 Team Explorer (TE2008.).

Further understanding and guidance for use of VS and VSTS, can be found at Microsoft: <http://msdn2.microsoft.com/en-us/library/aa187917.aspx>

Within this documentation, the following sections will provide a good basis to begin:

For all team members

Visual Studio 2008\Visual Studio Team System\Team Foundation\Getting Started with Team Foundation Server

For developers

Visual Studio 2008\Visual Studio\Introducing Visual Studio

Visual Studio 2008\Visual Studio\Application Development in Visual Studio

Further review will provide detailed information on more specific roles, activities, and abilities for team members.



Please note, that TeamDevCentral is hosting VSTS 2008 and includes all offerings of the Architecture, Database, Development, and Test Editions cited in the Microsoft documentation.

Complete instructions for using TE2008 may be found here:

[http://msdn2.microsoft.com/en-us/library/ms181304\(VS.80\).aspx](http://msdn2.microsoft.com/en-us/library/ms181304(VS.80).aspx)

Optional Build Box

While developers can execute builds locally during trials, should you wish to have a build box available, please contact trials@teamdevcentral.com to request a temporary one.